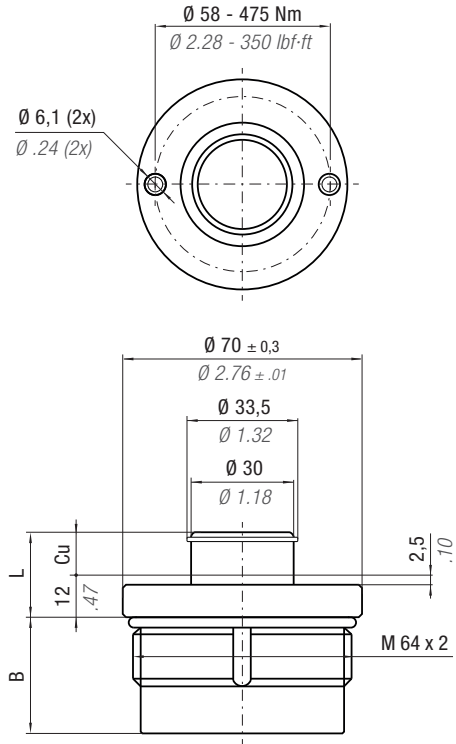
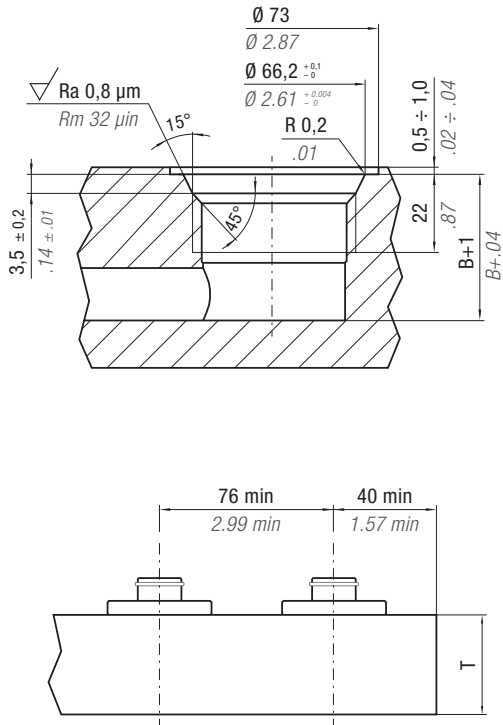


**ACTIVE SAFETY**



<b>Max Speed</b> 158 ft/min 0,8 m/s	32 - 176 °F 0 - 80 °C	<b>N<sub>2</sub></b>	<b>P max</b> 1595 psi 110 bar	<b>P min</b> 290 psi 20 bar	<b>S</b> 3.55 in <sup>2</sup> 22,9 cm <sup>2</sup>							
PART NUMBER	F <sub>0</sub> Initial Force		C <sub>u</sub>		L		B		T			
	ton	daN	inch	mm	inch	mm	inch	mm	inch	mm	~ lb	~ Kg
CA 2500 - 006 - A	2.52	2520	0.24	6	0.71	18	1.18	30	2.20	56	1.77	0,80
CA 2500 - 010 - A			0.39	10	0.87	22	1.34	34	2.36	60	1.85	0,84
CA 2500 - 015 - A			0.59	15	1.06	27	1.54	39	2.56	65	1.96	0,89
CA 2500 - 020 - A			0.79	20	1.26	32	1.73	44	2.76	70	2.06	0,94

<b>HOW TO ORDER</b> p. 35	<b>ACCESSORIES</b> p. 47	<b>SERVICE TOOLS</b> p. 68 Part Number 58UT054A	<b>MAINTENANCE KIT</b> Part Number 39BMCA02500A
------------------------------	-----------------------------	--	--