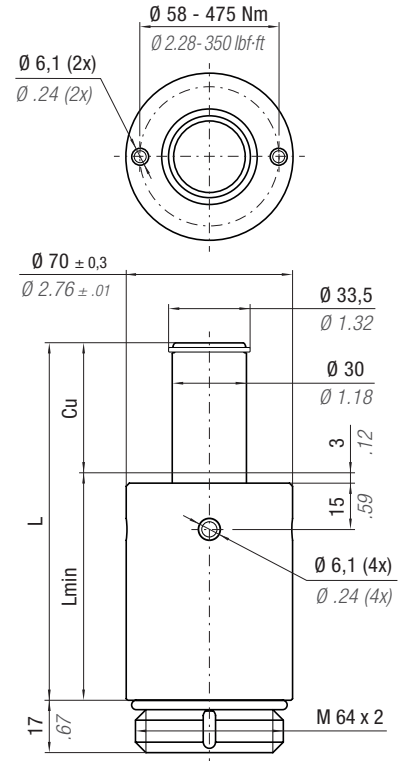
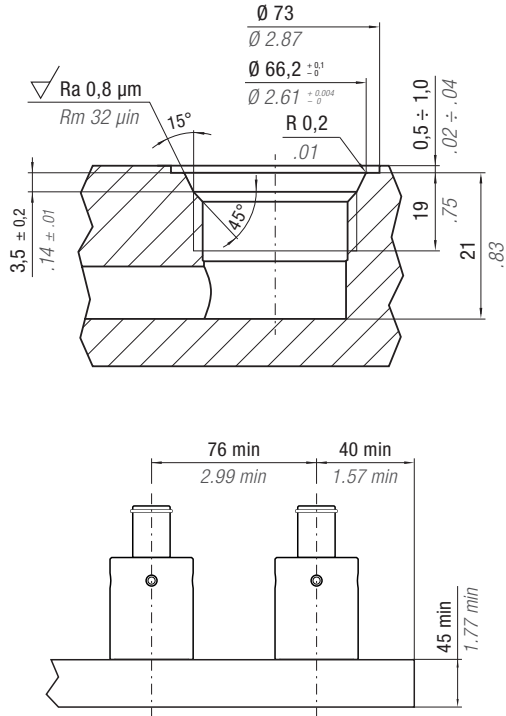


ACTIVE SAFETY



Max Speed 158 ft/min 0.8 m/s	32 - 176 °F 0 - 80 °C	N₂	P max 1595 psi 110 bar	P min 290 psi 20 bar	S 3.55 in ² 22.9 cm ²	
---	--------------------------	----------------------	-------------------------------------	-----------------------------------	--	--

PART NUMBER	F ₀ Initial Force		C _u		L		L min			
	ton	daN	inch	mm	inch	mm	inch	mm	~ lb	~ Kg
CC 2500 - 025 - A	2.52	2520	0.98	25	2.89	73.5	1.91	48.5	2.96	1.34
CC 2500 - 038 - A			1.50	38	3.92	99.5	2.42	61.5	3.47	1.57
CC 2500 - 050 - A			1.97	50	4.86	123.5	2.89	73.5	3.94	1.79
CC 2500 - 075 - A			2.95	75	6.83	173.5	3.88	98.5	4.92	2.23
CC 2500 - 100 - A			3.94	100	8.80	223.5	4.86	123.5	5.90	2.68
CC 2500 - 150 - A			5.91	150	12.74	323.5	6.83	173.5	7.86	3.56

HOW TO ORDER p. 43	ACCESSORIES p. 47	SERVICE TOOLS p. 68 Part Number 58UT050A or 58UT054A	MAINTENANCE KIT Part Number 39MBCB02500A
------------------------------	-----------------------------	--	--