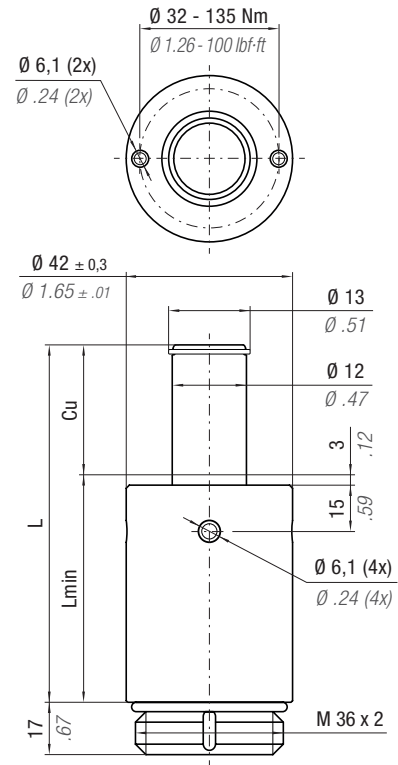
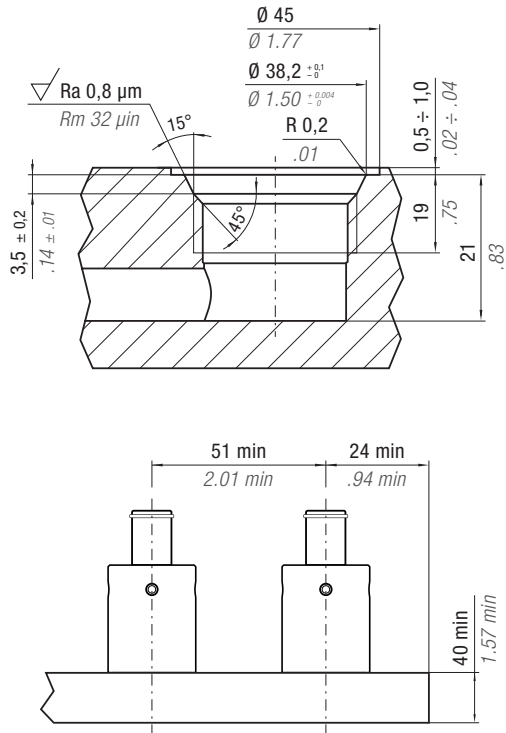


ACTIVE SAFETY



Max Speed 158 ft/min 0,8 m/s	32 - 176 °F 0 - 80 °C	N₂	P max 1595 psi 110 bar	P min 290 psi 20 bar	S .76 in ² 4,90 cm ²	
---	--------------------------	----------------------	-------------------------------------	-----------------------------------	---	--

PART NUMBER	F ₀ Initial Force		C _u		L		L min			
	ton	daN	inch	mm	inch	mm	inch	mm	~ lb	~ Kg
CC 500 - 012 - A	.54	540	0.49	12,5	1.79	45,5	1.30	33,0	0.81	0,37
CC 500 - 025 - A			0.98	25	2.78	70,5	1.79	45,5	1.03	0,47
CC 500 - 038 - A			1.50	38	3.80	96,5	2.30	58,5	1.26	0,57
CC 500 - 050 - A			1.97	50	4.74	120,5	2.78	70,5	1.47	0,67
CC 500 - 075 - A			2.95	75	6.71	170,5	3.76	95,5	1.90	0,86
CC 500 - 100 - A			3.94	100	8.68	220,5	4.74	120,5	2.34	1,06

HOW TO ORDER p. 43	ACCESSORIES p. 47	SERVICE TOOLS p. 68 Part Number 58UT050A or 58UT054A	MAINTENANCE KIT Part Number 39BMCC00500A
------------------------------	-----------------------------	--	--