

.5 ton
.75 ton

CR 750

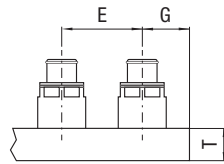
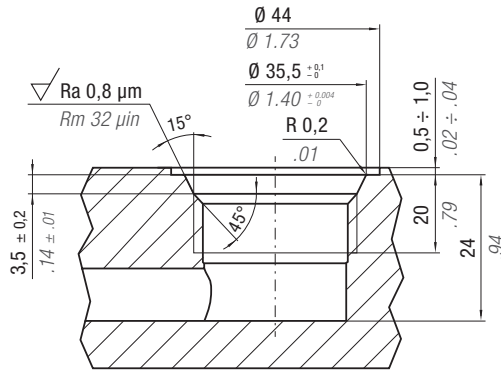


SW

ACTIVE SAFETY

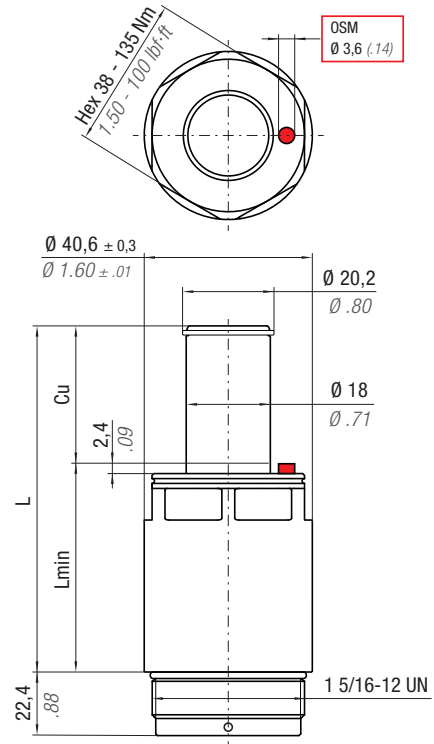


OSAS



P*		E min		G min		T min	
psi	bar	inch	mm	inch	mm	inch	mm
1500	103	2.00	51	0.94	24	1.73	44
2000	138	2.00	51	1.02	26	1.89	48

P* = Charging pressure



Max Speed 315 ft/min 1,6 m/s	32 - 176 °F 0 - 80 °C	N ₂	P max 2000 psi 138 bar	P min 363 psi 25 bar	S .761 in ² 4,91 cm ²	
---	--------------------------	----------------	-------------------------------------	-----------------------------------	--	--

PART NUMBER	F ₀ Initial Force		Cu		L		L min			
	.5 ton 500 daN	.75 ton 750 daN	inch	mm	inch	mm	inch	mm	~ lb	~ Kg
CR 750 - 0.25 - A			0.25	6,4	1.16	29,5	0.91	23,1	0.64	0,29
CR 750 - 0.50 - A			0.50	12,7	1.66	42,2	1.16	29,5	0.76	0,35
CR 750 - 0.75 - A			0.75	19,1	2.16	54,9	1.41	35,8	0.89	0,40
CR 750 - 1.00 - A			1.00	25,4	2.66	67,6	1.66	42,2	1.01	0,46
CR 750 - 1.50 - A			1.50	38,1	3.66	93,0	2.16	54,9	1.25	0,57
CR 750 - 2.00 - A			2.00	50,8	4.66	118,4	2.66	67,6	1.48	0,67
CR 750 - 2.50 - A			2.50	63,5	5.66	143,8	3.16	80,3	1.72	0,78
CR 750 - 3.00 - A			3.00	76,2	6.66	169,2	3.66	93,0	1.96	0,89
CR 750 - 3.50 - A			3.50	88,9	7.66	194,6	4.16	105,7	2.20	1,00
CR 750 - 4.00 - A			4.00	101,6	8.66	220,0	4.66	118,4	2.43	1,10

HOW TO ORDER p. 17	ACCESSORIES p. 47	SERVICE TOOLS p. 68 Part Number 58UT044A	MAINTENANCE KIT Part Number 39BMCRO0750A
------------------------------	-----------------------------	--	--