

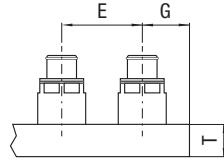
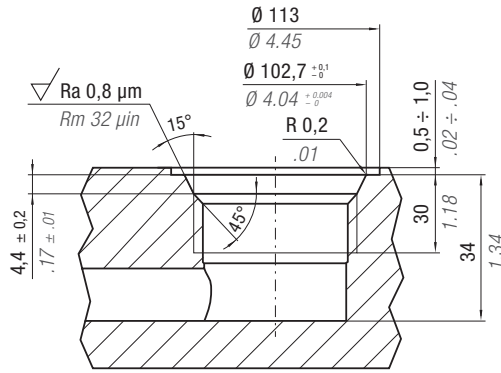


SW

**ACTIVE SAFETY**

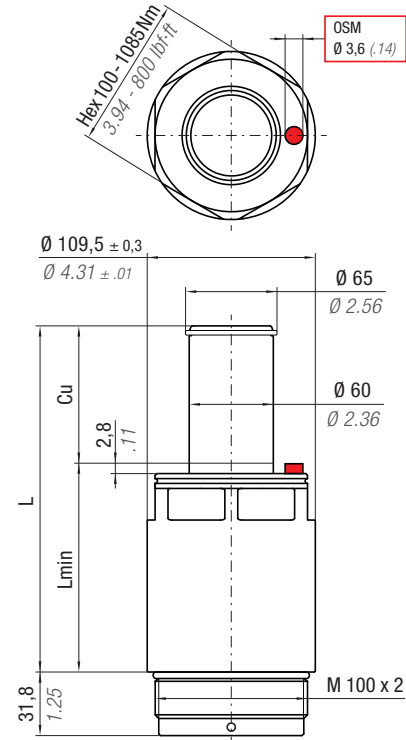


OSAS



P*		E min		G min		Tmin	
psi	bar	inch	mm	inch	mm	inch	mm
1500	103	4.45	114	2.50	64	2.52	64
2000	138	5.38	137	3.00	77	2.87	73

P\* = Charging pressure



<b>Max Speed</b> 315 ft/min 1,6 m/s	32 - 176 °F 0 - 80 °C	N <sub>2</sub>	<b>P max</b> 2000 psi 138 bar	<b>P min</b> 363 psi 25 bar	<b>S</b> 7.79 in <sup>2</sup> 50,27 cm <sup>2</sup>	
-------------------------------------------	--------------------------	----------------	-------------------------------------	-----------------------------------	-----------------------------------------------------------	--

PART NUMBER	F <sub>0</sub> Initial Force	Cu		L		L min			
		inch	mm	inch	mm	inch	mm	~ lb	~ Kg
CR 8000 - 0.50 - A	<div style="display: flex; justify-content: space-around;"> <div style="text-align: center;"> <p>6 ton 6000 daN</p> <p>1500 psi 103 bar</p> </div> <div style="text-align: center;"> <p>8 ton 8000 daN</p> <p>2000 psi 138 bar</p> </div> </div>	0.50	12,7	1.91	48,5	1.41	35,8	8.32	3,77
CR 8000 - 0.75 - A		0.75	19,0	2.41	61,2	1.66	42,1	9.07	4,11
CR 8000 - 1.00 - A		1.00	25,4	2.91	73,9	1.91	48,5	9.89	4,48
CR 8000 - 1.50 - A		1.50	38,1	3.91	99,3	2.41	61,2	11.42	5,18
CR 8000 - 2.00 - A		2.00	50,8	4.91	124,7	2.91	73,9	13.01	5,90
CR 8000 - 2.50 - A		2.50	63,5	5.91	150,1	3.41	86,6	14.55	6,60
CR 8000 - 3.00 - A		3.00	76,2	6.91	175,5	3.91	99,3	16.18	7,34
CR 8000 - 3.50 - A		3.50	88,9	7.91	200,9	4.41	112,0	17.71	8,03
CR 8000 - 4.00 - A		4.00	101,6	8.91	226,3	4.91	124,7	19.24	8,73
CR 8000 - 4.50 - A		4.50	114,3	9.91	251,7	5.41	137,4	20.87	9,47
CR 8000 - 5.00 - A		5.00	127,0	10.91	277,1	5.91	150,1	22.40	10,16
CR 8000 - 5.50 - A		5.50	139,7	11.91	302,5	6.41	162,8	24.01	10,89
CR 8000 - 6.00 - A		6.00	152,4	12.91	327,9	6.91	175,5	25.56	11,59
CR 8000 - 6.50 - A		6.50	165,1	13.91	353,3	7.41	188,2	27.09	12,29
CR 8000 - 7.00 - A		7.00	177,8	14.91	378,7	7.91	200,9	28.70	13,02
CR 8000 - 7.50 - A		7.50	190,5	15.91	404,1	8.41	213,6	30.23	13,71
CR 8000 - 8.00 - A	8.00	203,2	16.91	429,5	8.91	226,3	31.86	14,45	

**HOW TO ORDER**  
 p. 17

**ACCESSORIES**  
 p. 47

**SERVICE TOOLS** p. 68  
Part Number 58UT048A

**MAINTENANCE KIT**  
Part Number 39BMCRO8000A