

6 ton
8 ton

CRD 8000

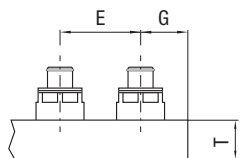
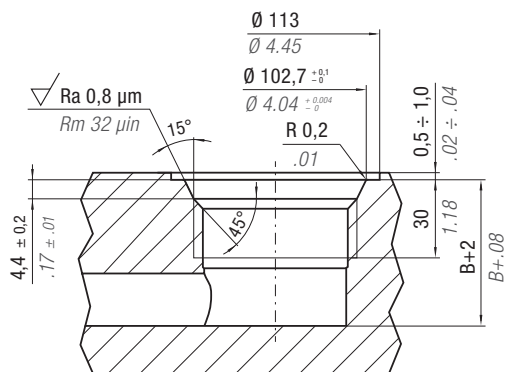


SW

ACTIVE SAFETY

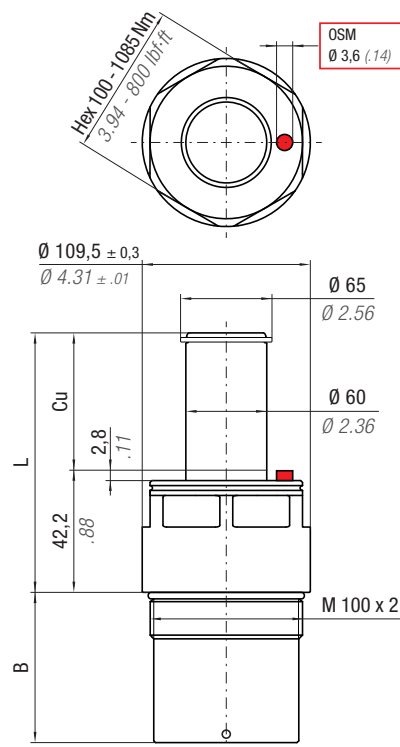


OSAS



P*	E min		G min		
	psi	bar	inch	mm	inch
1500	103	4.45	114	2.50	64
2000	138	5.38	137	3.00	77

P* = Charging pressure



Max Speed 315 ft/min 1,6 m/s	32 - 176 °F 0 - 80 °C	N ₂	P max 2000 psi 138 bar	P min 363 psi 25 bar	S 7.79 in ² 50,27 cm ²	
---	--------------------------	----------------	-------------------------------------	-----------------------------------	---	--

PART NUMBER	F ₀ Initial Force	C _u		L		B		T* min		T** min		Weight	
		inch	mm	inch	mm	inch	mm	inch	mm	inch	mm	~ lb	~ Kg
CRD 8000 - 1.00 - A	<div style="display: flex; justify-content: space-around;"> <div style="text-align: center;"> <p>6 ton 6000 daN</p> <p>1500 psi 103 bar</p> </div> <div style="text-align: center;"> <p>8 ton 8000 daN</p> <p>2000 psi 138 bar</p> </div> </div>	1.00	25,4	2.66	67,6	1.50	38,1	2.52	64,0	2.87	73,0	9.42	4,27
CRD 8000 - 1.50 - A		1.50	38,1	3.16	80,3	2.00	50,8	2.76	70,0	3.15	80,0	10.53	4,78
CRD 8000 - 2.00 - A		2.00	50,8	3.66	93	2.50	63,5	3.27	83,0	3.62	92,0	11.63	5,28
CRD 8000 - 2.50 - A		2.50	63,5	4.16	105,7	3.00	76,2	3.74	95,0	4.13	105,0	12.74	5,78
CRD 8000 - 3.00 - A		3.00	76,2	4.66	118,4	3.50	88,9	4.25	108,0	4.65	118,0	13.85	6,28
CRD 8000 - 3.50 - A		3.50	88,9	5.16	131,1	4.00	101,6	4.76	121,0	5.12	130,0	14.96	6,79
CRD 8000 - 4.00 - A		4.00	101,6	5.66	143,8	4.50	114,3	5.24	133,0	5.63	143,0	16.07	7,29
CRD 8000 - 4.50 - A		4.50	114,3	6.16	156,5	5.00	127,0	6.54	166,0	6.14	156,0	17.17	7,79
CRD 8000 - 5.00 - A		5.00	127,0	6.66	169,2	5.50	139,7	6.25	158,8	6.61	168,0	18.28	8,29
CRD 8000 - 5.50 - A		5.50	139,7	7.16	181,9	6.00	152,4	6.75	171,5	7.13	181,0	19.39	8,79
CRD 8000 - 6.00 - A		6.00	152,4	7.66	194,6	6.50	165,1	7.25	184,2	7.64	194,0	20.49	9,30
CRD 8000 - 6.50 - A		6.50	165,1	8.16	207,3	7.00	177,8	7.75	196,9	8.15	207,0	21.60	9,80
CRD 8000 - 7.00 - A		7.00	177,8	8.66	220,0	7.50	190,5	8.25	209,6	8.62	219,0	22.71	10,30
CRD 8000 - 7.50 - A		7.50	190,5	9.16	232,7	8.00	203,2	8.75	222,3	9.13	232,0	23.82	10,80
CRD 8000 - 8.00 - A		8.00	203,2	9.66	245,4	8.50	215,9	9.25	235,0	9.65	245,0	24.93	11,31

T* = 1500 psi/103 bar T** = 2000 psi/138 bar



HOW TO ORDER

p. 27



ACCESSORIES

p. 47

SERVICE TOOLS p. 68

Part Number 58UT048A

MAINTENANCE KIT

Part Number 39BMCRO8000A