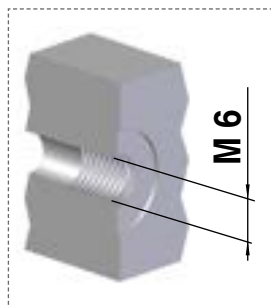


LINKED SYSTEM SELECTION

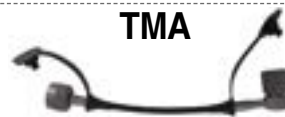


M 6

FLEXFLOW - CONNECTIONS S12,65x1,5

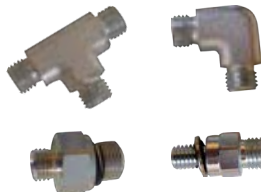
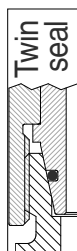


TMA



Low gas flow

MICRO - CONNECTIONS M8x1



TSM



Low gas flow

JIC 37° - CONNECTIONS 7/16"-20 UNF



TNC



High gas flow

ORFS - CONNECTIONS 9/16"-18 UNF

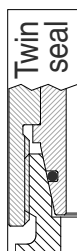


HY 400



High gas flow

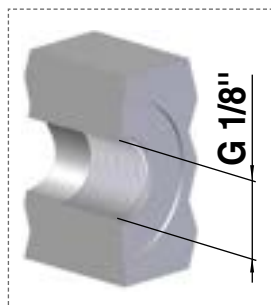
EO - 24° - CONNECTIONS M12x1,5



HY 500



High gas flow



G 1/8"

IT

- Pressa trasportabile con pompa pneumatica idraulica
- Idonea per raccordi dritti, 45° e 90°

EN

- Transportable press with hydraulic manual pump
- Suitable for straight, 45° and 90° fittings

DE

- Transportable Presse mit manueller Hydraulikpumpe
- Geeignet für gerade, 45° und 90° Anschlüsse

FR

- Presse transportable avec pompe oléodynamique manuelle
- Utilisable avec raccords droits, 45° et 90°

ES

- Prensa transportable con bomba oleodinámica manual
- Puede ser utilizada con tuberías derechas, 45° y 90°

PT

- Prensa transportável com bomba hidráulica manual
- Pode ser usado com tubos retos, 45° e 90°

code 39PR06



code 58UT022A (included)



IT Utensile rimuovi morsetti con calamita
EN Magnet tool to remove pressing jaws
DE Magnetwerkzeug für die Entfernung von Pressbacken
FR Outil magnétique pour enlever les mâchoires de pressage
ES Herramienta magnética para sacar las mordazas de la prensa
PT Ferramenta magnética para remover os mordentes de prensar

code 58UT001A (optional)



IT Forbice taglia tubo
EN Scissor for hose
DE Schlauchschneideschere
FR Ciseaux coupe-tube
ES Tijeras cortatubos
PT Tesouras corta tubos

code 58UT023A (optional)



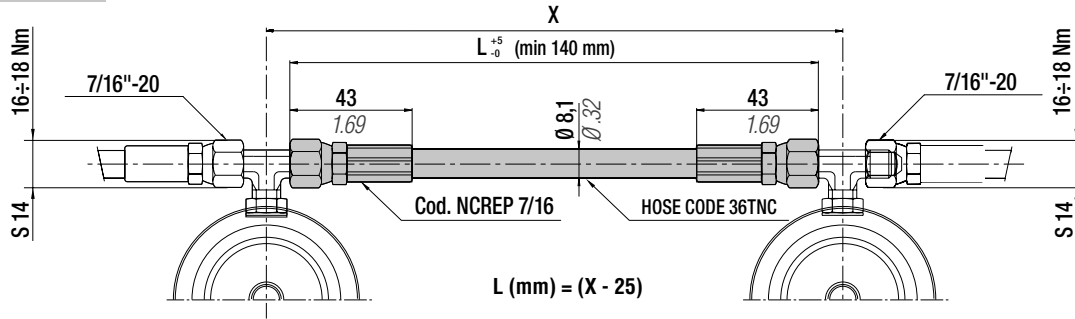
IT Lampada led con magnete
EN LED Light with magnet
DE LED-Lampe mit Magnet
FR Lampe à LED magnétique
ES Lámpara LED con imán
PT Lâmpada LED com íman

| | | | | |
|------------------|-----------------------|---|----------------|---------------------------|
| | | | | |
| AIR | | L x P x H | Kg | °F °C |
| 7 bar 110 psi | 100 TON 110 US TON | 380 x 430 x 400 mm 15 x 17 x 16 inch | 38 kg 84 lb | -5 ÷ 40 °C 23 ÷ 104 °F |

| CONNECTIONS | ORFS "TSM" HOSE Ø 5,5 p. 288 | Micro 32° - JIC 37° "TSM" HOSE Ø 5,5 p. 272 - 273 | FlexFlow "TMA" HOSE Ø 5,1 p. 275 | JIC 37° "TNB" HOSE Ø 8 p. 273 | EO 24° "HY 500" HOSE Ø 11 p. 268 | ORFS "HY 400" HOSE Ø 12,7 p. 284 |
|---------------|---------------------------------|--|-------------------------------------|----------------------------------|-------------------------------------|-------------------------------------|
| | | | | | | |
| PRESSING JAWS | code 39MTR10 (optional) | code 39MTR11 (optional) | code 39MTR12 (optional) | code 39MTR13 (optional) | | |

Ordering example: **39PR06A + 39MTR11** | Pressing jaws for Jic 37° "TNB" HOSE Ø 8,1

code TNC 7/16...



| Technical data | | | | |
|-----------------------|------------------|-------------------|--------------|--------------------------|
| "L" min | See above | 5.51 in | Volume | 12,6 ml/metre |
| Operation pressure | 420 bar | 6090 psi | Dimension | 1/8" (external Ø 8,1 mm) |
| Burst Pressure | 1680 bar at 20°C | 24360 psi at 68°F | Material | Thermoplastic |
| R (bending radius) | 25 mm | 0.98 in | Standard | SAE 100R8 |
| Operation temperature | -40+ 100°C | -38 +212°F | Outer casing | Perforated |

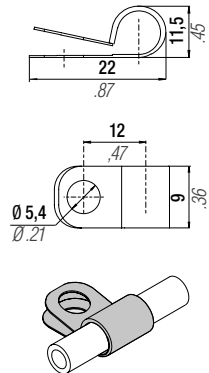


Lunghezze standard (mm) inclusive di n. 2 raccordi NCREP 7/16
Standard lengths (mm) inclusive of no. 2 connections NCREP 7/16
Standard-Länge (mm) einsch. 2 NCREP 7/16 -Anschlüssen

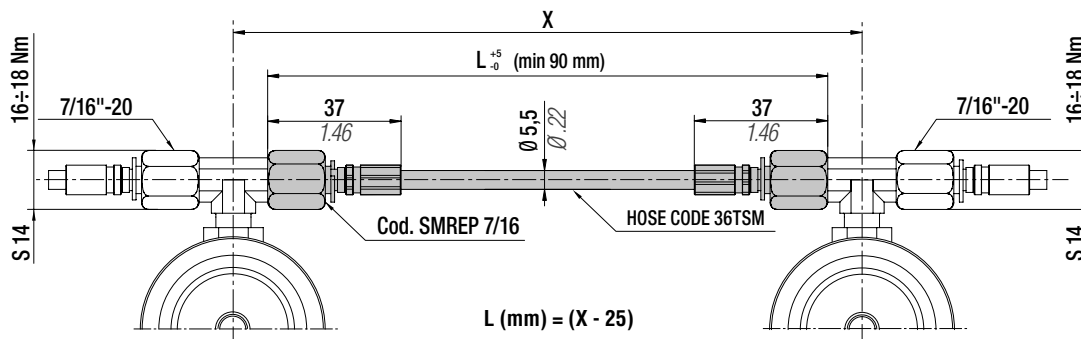
Longueur standard (mm) comprenant 2 raccords NCREP 7/16
Longitud estándar (mm) con 2 racores incluidos NCREP 7/16
Comprimento standard (mm) incluído nas 2 ligações NCREP 7/16

L = 5 mm upward increase - Example (TNC 7/16 140 mm; TNC 7/16 145 mm ...)

code: 36FF09A



code TSM7/16...



| Technical data | | | | |
|-----------------------|------------------|-------------------|--------------|---------------------------|
| "L" min | See above | 3.54 in | Volume | 3 ml/metre |
| Operation pressure | 630 bar | 9135 psi | Dimension | 5/64" (external Ø 5,5 mm) |
| Burst Pressure | 1890 bar at 20°C | 27400 psi at 68°F | Material | Thermoplastic |
| R (bending radius) | 20 mm | 0.79 in | Standard | - |
| Operation temperature | -40+ 100°C | -38 +212°F | Outer casing | Perforated |

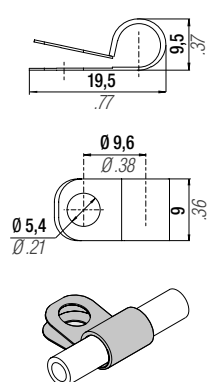


Lunghezze standard (mm) inclusive di n. 2 raccordi SMREP 7/16
Standard lengths (mm) inclusive of no. 2 connections SMREP 7/16
Standard-Länge (mm) einsch. 2 SMREP 7/16 -Anschlüssen

Longueur standard (mm) comprenant 2 raccords SMREP 7/16
Longitud estándar (mm) con 2 racores incluidos SMREP 7/16
Comprimento standard (mm) incluído nas 2 ligações SMREP 7/16

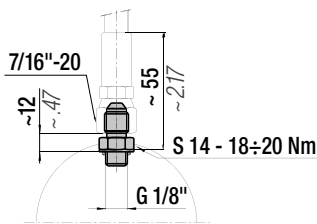
L = 5 mm upward increase - Example (TSM 7/16 90 mm; TSM 7/16 100 mm ...)

code: 36FF06A

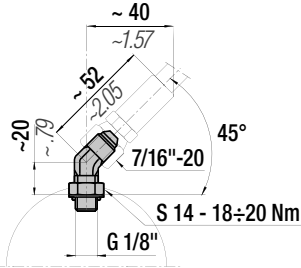


Raccordi tubo-cilindro/pannello - Hose-cylinder/panel connections - Anschlüsse zwischen schlauch und Zylinder/Kontrollarmatur -
Raccords tuyau-cylindre/tableau - Racores manguera-cilindros/panel - Racord tubo-cilindro/panel

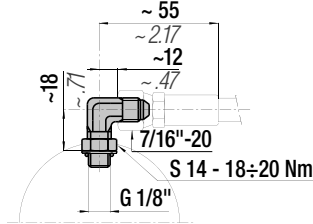
code RTC-D



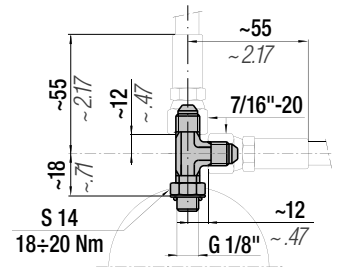
code RTC-M



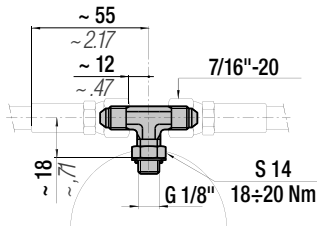
code RTC-R



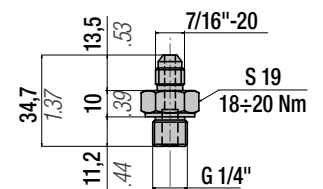
code RTC-L



code RTC-T

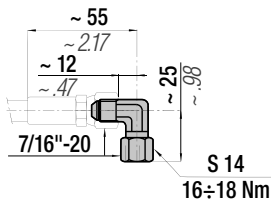


code 36J01A

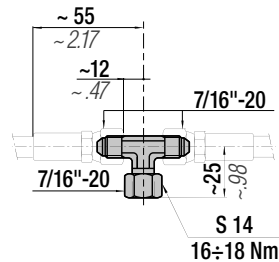


Raccordi di derivazione - Offtake connections - Anschlußstutzen - Raccords de dérivation - Racores de derivación - Racord de derivação

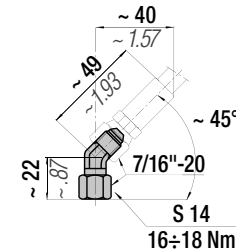
code RDR



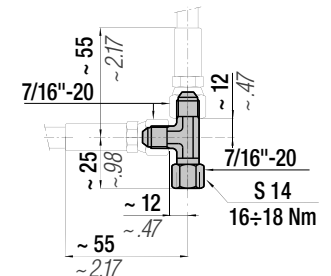
code RDT



code RDM

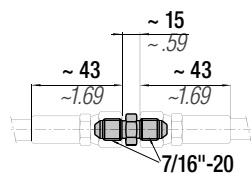


code RDL

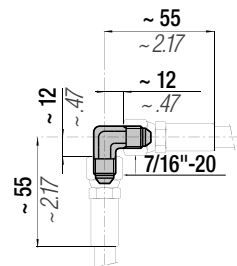


Raccordi tubo-tubo - Hose-hose connections - Anschlüsse zwischen Schlauch und Schlauch - Raccords tuyau-tuyau - Racores tubo-tubo - Racord tubo-tubo

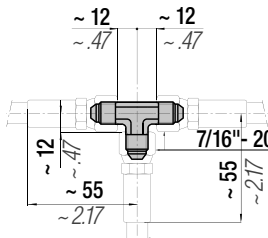
code RTT-D



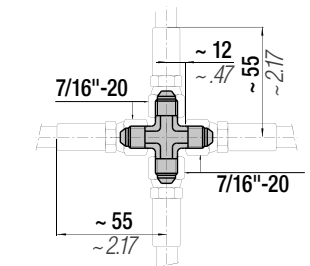
code RTT-R



code RTT-T



code RTT-C



⚠ Available ONLY for loose supply

**JIC 37°
Hose Ø 8 mm**

TNB

PARKER made

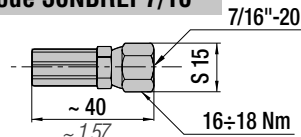
Hose

code 36TNB



Hose fittings

code 36NBREP7/16



Technical data

| | | |
|-----------------------|------------------|-------------------|
| "L" min | 140 mm | 5.51 in |
| Operation pressure | 415 bar | 6017 psi |
| Burst Pressure | 1655 bar at 20°C | 24000 psi at 68°F |
| R (bending radius) | 13 mm | 0.51 in |
| Operation temperature | -40+ 100°C | -38 +212°F |

All dimensions in mm/inch