

ACTIVE SAFETY



OSAS



USAS



OPAS

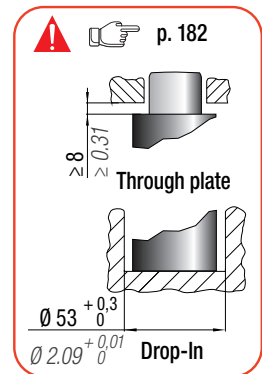
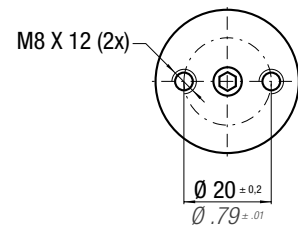
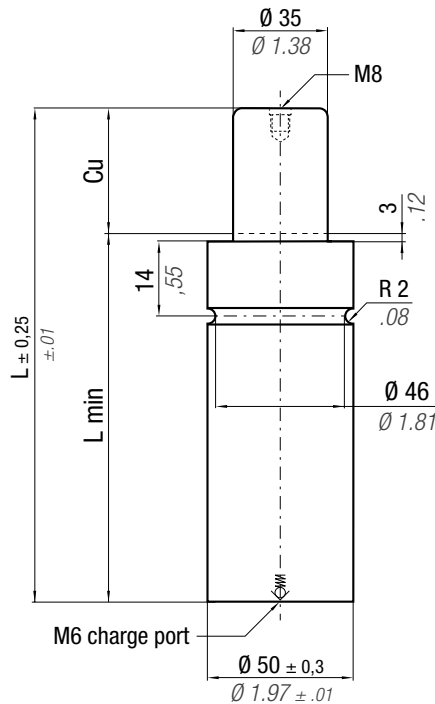
* $F_{1i} =$
Isothermal
end force
at 100% Cu



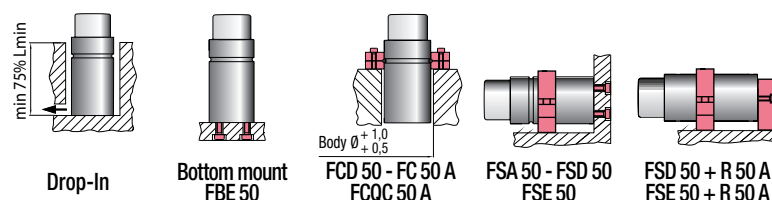
p. 16



** $F_{1p} =$
Polytropic
end force
at 100% Cu



CODE	Cu	L	L min	F ₀		F _{1i} *		F _{1p} **		V ₀		Maintenance kit		
				Initial force	End force *	End force **	cm ³	in ³	~Kg	~lb				
MP 2000 - 010 - A	10	90	80	2000 ± 5%	4496	2634	5921	2902	6524	52,4	3,20	0,76	1,68	✓
MP 2000 - 015 - A	15	115	100			2617	5883	2880	6474	80,4	4,90	0,89	1,96	✓
MP 2000 - 020 - A	20	125	105			2775	6238	3088	6942	89,6	5,47	0,93	2,05	✓
MP 2000 - 025 - A	25	135	110			2916	6555	3276	7365	98,7	6,02	0,98	2,16	✓
MP 2000 - 032 - A	32	150	118			3074	6911	3487	7839	112,8	6,88	1,04	2,29	✓
MP 2000 - 038 - A	38	165	127			3153	7088	3593	8077	127,5	7,78	1,11	2,45	✓
MP 2000 - 045 - A	45	180	135			3269	7349	3751	8433	141,6	8,64	1,18	2,60	✓
MP 2000 - 050 - A	50	190	140			3355	7542	3868	8696	150,7	9,19	1,22	2,69	✓
MP 2000 - 056 - A	56	205	149			3398	7639	3926	8826	165,5	10,10	1,29	2,84	✓
MP 2000 - 063 - A	63	220	157			3480	7823	4039	9080	179,5	10,95	1,36	3,00	✓
MP 2000 - 080 - A	80	255	175	3668	8246	4299	9665	211,9	12,93	1,51	3,33	✓		



HOW TO ORDER

p. 183

INSTALLATION GUIDELINE

p. 205