

Il nuovo codice sarà fornito solo ad esaurimento del vecchio - The new code will be supplied only when the old will be out of stock - Der neue Kode wird nur angegeben, wenn der alte nicht mehr lieferbar ist - Le nouveau code sera fourni uniquement lorsque le vieux stock sera écoulé - El nuevo código será suministrado sólo cuando se agoten las existencias del antiguo - O novo código irá ser fornecido apenas quando o antigo esgotar stock

ACTIVE SAFETY



OSAS



USAS



OPAS



SKUDO



p. 247

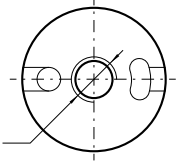
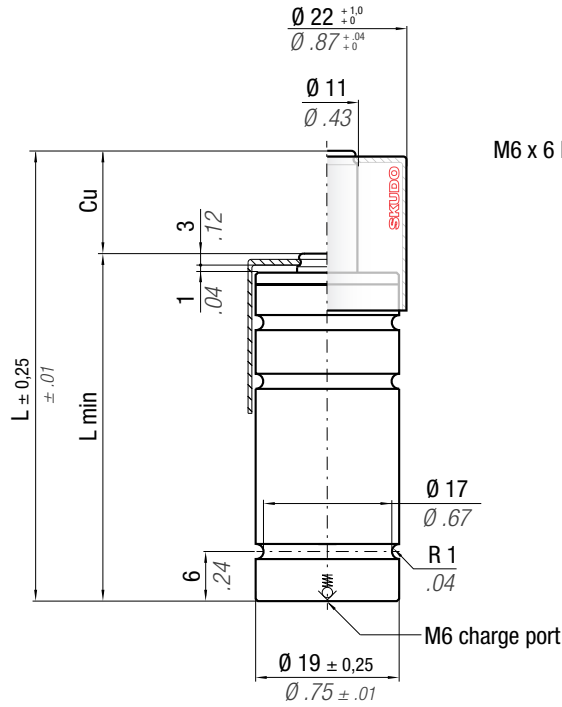
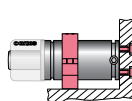
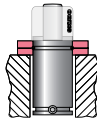
* $F_{1i} =$

Isothermal end force at 100% Cu

p. 16

** $F_{1p} =$

Polytropic end force at 100% Cu



M6 x 6 Max

Ø 17

Ø .67

R 1

.04

M6 charge port

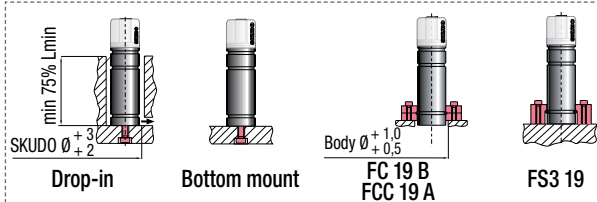
Ø 19 ± 0.25
Ø .75 ± .01

	0 - 80 °C 32 - 176 °F	ΔP ± 0,33 %/°C	P max 180 bar 2610 psi	P min 20 bar 290 psi	S 0,95 cm ² 0,147 in ²	SPM ~ 40 - 100 (at 20°C)	Max Speed 1,8 m/s 70,8 in/s	Maintenance kit Disposable
--	--------------------------	---------------------------	-------------------------------------	-----------------------------------	---	---------------------------------------	--	--------------------------------------

CODE PHASING OUT from 05/2019	NEW	Cu		L		L min		F ₀		F _{1i} *		F _{1p} **		V ₀		~Kg	~lb	PED 2014/68/EU
		mm	inch	mm	inch	mm	inch	daN	lb	daN	lb	daN	lb	cm ³	in ³			
RS 170 - 007 - B	RS 170 - 007 - C	7	0.28	50	1.97	43	1.69	171 ± 5% 180 bar 2610 psi + 20 °C + 68 °F	384	239	537	270	607	2,9	0.17	0,06	0.13	✓
RS 170 - 010 - B	RS 170 - 010 - C	10	0.39	56	2.20	46	1.81			253	568	290	652	3,6	0.22	0,07	0.14	✓
RS 170 - 012 - B	RS 170 - 012 - C	12	0.47	60	2.36	48	1.89			260	584	300	674	4,0	0.25	0,07	0.15	✓
RS 170 - 016 - B	RS 170 - 016 - C	16	0.63	68	2.68	52	2.05			270	607	315	709	5,0	0.30	0,07	0.16	✓
RS 170 - 022 - B	RS 170 - 022 - C	22	0.87	80	3.15	58	2.28			281	632	331	744	6,4	0.39	0,08	0.17	✓
RS 170 - 029 - B	RS 170 - 029 - C	29	1.14	94	3.70	65	2.56			289	650	343	771	8,1	0.49	0,09	0.19	✓
RS 170 - 035 - B	RS 170 - 035 - C	35	1.38	106	4.17	71	2.80			294	662	350	788	9,5	0.58	0,09	0.21	✓
RS 170 - 047 - B	RS 170 - 047 - C	47	1.85	130	5.12	83	3.27			301	677	360	810	12,4	0.76	0,11	0.24	✓
RS 170 - 060 - B	RS 170 - 060 - C	60	2.36	156	6.14	96	3.78			306	687	367	826	15,5	0.94	0,12	0.27	✓
RS 170 - 072 - B	RS 170 - 072 - C	72	2.83	185	7.28	113	4.45			306	688	368	827	18,5	1.13	0,14	0.31	✓
RS 170 - 077 - B	RS 170 - 077 - C	77	3.03	195	7.68	118	4.65			307	690	370	831	19,7	1.20	0,15	0.32	✓
RS 170 - 097 - B	RS 170 - 097 - C	97	3.82	235	9.25	138	5.43			311	698	375	843	24,5	1.49	0,17	0.37	✓
RS 170 - 122 - B	RS 170 - 122 - C	122	4.80	285	11.22	163	6.42			313	704	379	852	30,4	1.86	0,19	0.43	✓

WARNING REMOVE SKUDO

Upside down mounting



HOW TO ORDER

p. 73

INSTALLATION GUIDELINE

p. 205