

OSAS + OSM = **OVER STROKE ACTIVE SAFETY** + **OVER STROKE MARKER**

ACTIVE SAFETY



OSAS



USAS



OPAS



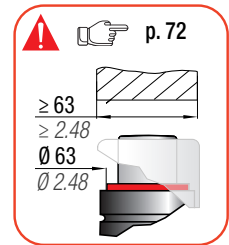
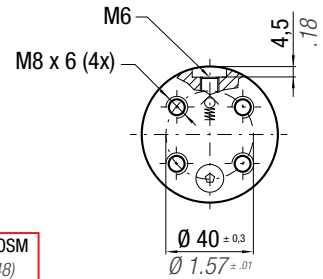
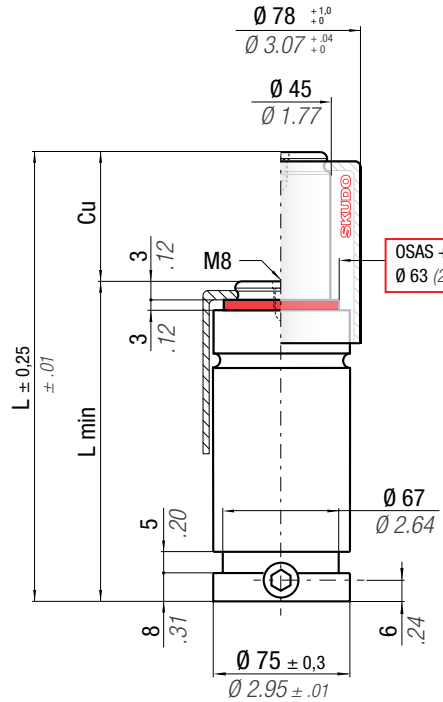
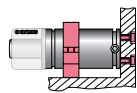
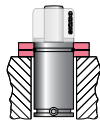
SKUDO

Il nuovo codice sarà fornito solo ad esaurimento del vecchio
 The new code will be supplied only when the old will be out of stock
 Der neue Kode wird nur angegeben, wenn der alte nicht mehr lieferbar ist
 Le nouveau code sera fourni uniquement lorsque le vieux stock sera écoulé
 El nuevo código será suministrado sólo cuando se agoten las existencias del antiguo
 O novo código irá ser fornecido apenas quando o antigo esgotar stock

easU MANIFOLD p. 247

* F_{1i} = Isothermal end force at 100% Cu p. 16

** F_{1p} = Polytrophic end force at 100% Cu

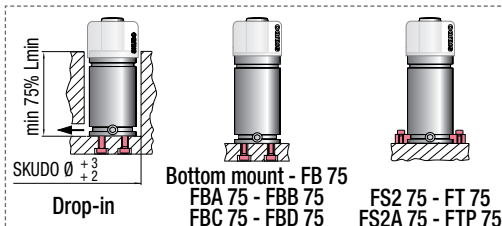


		0 - 80 °C 32 - 176 °F	ΔP ± 0,33 %/°C	P max 150 bar 2175 psi	P min 20 bar 290 psi	S 15,90 cm ² 2,465 in ²	SPM ~ 20 - 100 (at 20°C)	Max Speed 1,8 m/s 70,8 in/s	Maintenance kit 39BMRV02400D	
CODE PHASING OUT from 04/2021	NEW	Cu	L	L min	F ₀	F _{1i} *	F _{1p} **	V ₀		
RS 2400 - 013 - A	◆ RS 2400 - 013 - B	13 0.51	77 3.03	64 2.52	2385 5362 ± 5% 150 bar 2175 psi + 20 °C +68 °F	3232 7267	3737 8402	92 5.61	1,36 3,00	✓
RS 2400 - 016 - A	◆ RS 2400 - 016 - B	16 0.63	83 3.27	67 2.64		3334 7495	3894 8755	104 6.35	1,40 3,09	✓
RS 2400 - 022 - A	RS 2400 - 022 - B	22 0.87	95 3.74	73 2.87		3491 7847	4139 9305	128 7.81	1,50 3,31	✓
RS 2400 - 029 - A	RS 2400 - 029 - B	29 1.14	109 4.29	80 3.15		3622 8142	4347 9772	156 9.52	1,61 3,55	✓
RS 2400 - 035 - A	RS 2400 - 035 - B	35 1.38	121 4.76	86 3.39		3706 8332	4482 10076	180 10.98	1,70 3,75	✓
RS 2400 - 047 - A	RS 2400 - 047 - B	47 1.85	145 5.71	98 3.86		3828 8606	4678 10517	228 13.91	1,89 4,17	✓
RS 2400 - 060 - A	RS 2400 - 060 - B	60 2.36	171 6.73	111 4.37		3917 8806	4823 10843	280 17.09	2,09 4,61	✓
RS 2400 - 072 - A	RS 2400 - 072 - B	72 2.83	195 7.68	123 4.84		3976 8939	4920 11061	328 20.02	2,28 5,03	✓
RS 2400 - 077 - A	RS 2400 - 077 - B	77 3.03	205 8.07	128 5.04		3996 8984	4953 11136	348 21.24	2,36 5,20	✓
RS 2400 - 097 - A	RS 2400 - 097 - B	97 3.82	245 9.65	148 5.83		4059 9126	5057 11369	428 26.12	2,67 5,89	✓
RS 2400 - 122 - A	RS 2400 - 122 - B	122 4.80	295 11.61	173 6.81	4113 9246	5146 11568	528 32.22	3,07 6,77	✓	

◆ Disposable

WARNING REMOVE SKUDO

Upside down mounting



HOW TO ORDER p. 73

INSTALLATION GUIDELINE p. 205