



OSAS + OSM = OVER STROKE ACTIVE SAFETY + OVER STROKE MARKER

ACTIVE SAFETY



OSAS



USAS



OPAS

Il nuovo codice sarà fornito solo ad esaurimento del vecchio

The new code will be supplied only when the old will be out of stock

Der neue Kode wird nur angegeben, wenn der alte nicht mehr lieferbar ist

Le nouveau code sera fourni uniquement lorsque le vieux stock sera écoulé

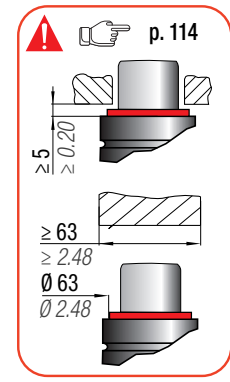
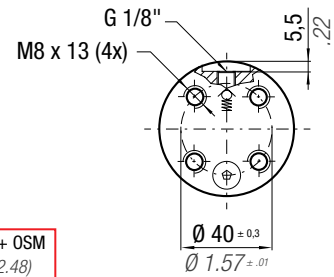
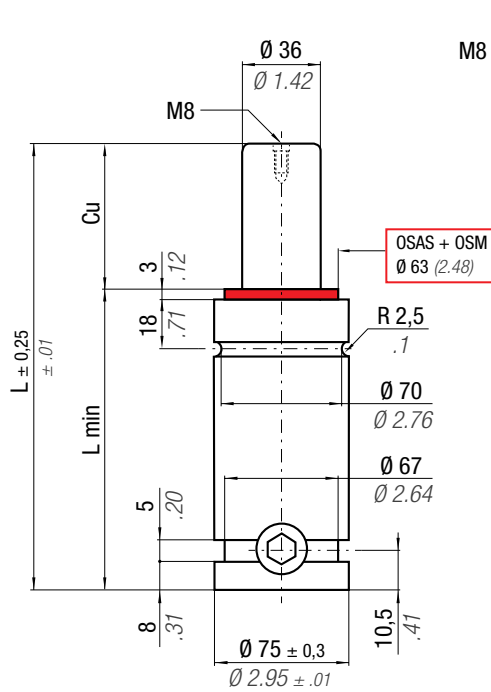
El nuevo código será suministrado sólo cuando se agoten las existencias del antiguo

O novo código irá ser fornecido apenas quando o antigo esgotar stock

easu MANIFOLD p. 247

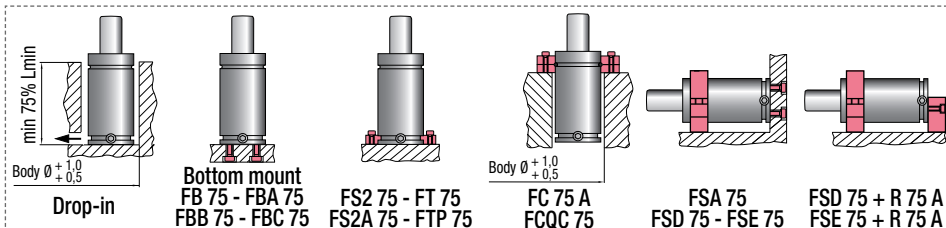
* F_{1i} = Isothermal end force at 100% Cu p. 16

** F_{1p} = Polyphobic end force at 100% Cu



N₂	0 - 80 °C 32 - 176 °F	ΔP ± 0,33 %/°C	P max 150 bar 2175 psi	P min 20 bar 290 psi	S 10,18 cm ² 1,578 in ²	SPM ~ 20 - 80 (at 20°C)	Max Speed 1,8 m/s 70,8 in/s	Maintenance kit 39BMS01500B
----------------------	--------------------------	---------------------------	-------------------------------------	-----------------------------------	--	--------------------------------------	--	---------------------------------------

CODE PHASING OUT from 04/2021	NEW	Cu		L		L min		F ₀ Initial force		F _{1i} * End force *		F _{1p} ** End force **		V ₀		PED 2014/68/EU		
		mm	inch	mm	inch	mm	inch	daN	lb	daN	lb	daN	lb	cm ³	in ³		~Kg	~lb
S 1500 - 025 - A	S 1500 - 025 - B	25	0.98	110	4.33	85	3.35	1530	3440	2238	5031	2655	5969	93	5.65	2,25	4.96	✓
S 1500 - 038 - A	S 1500 - 038 - B	38	1.50	136	5.35	98	3.86	± 5%	150 bar 2175 psi	2319	5214	2784	6258	131	7.97	2,53	5.58	✓
S 1500 - 050 - A	S 1500 - 050 - B	50	1.97	160	6.30	110	4.33			2363	5312	2854	6416	166	10.11	2,78	6.13	✓
S 1500 - 063 - A	S 1500 - 063 - B	63	2.48	186	7.32	123	4.84	2395	5383	2905	6530	204	12.43	3,06	6.75	✓		
S 1500 - 080 - A	S 1500 - 080 - B	80	3.15	220	8.66	140	5.51	2422	5445	2949	6630	253	15.46	3,42	7.54	✓		
S 1500 - 100 - A	S 1500 - 100 - B	100	3.94	260	10.24	160	6.30	+ 20 °C + 68 °F	2444	5494	2984	6708	312	19.03	3,84	8.47	✓	



HOW TO ORDER p. 115

INSTALLATION GUIDELINE p. 205